



TOOLBOX TALK



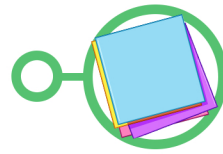
FALL ZONES

The Lifting Safety Blueprint and the Safety Lifting Rules provide simple guidelines to manage these risks. By focusing on preparation, equipment checks, safe distances, and clear communication, these principles help ensure lifting operations are carried out safely and efficiently.



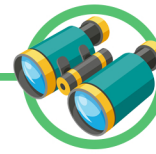
1. What checks must be completed before a lift begins?
2. Why must workers stay at least 3 meters away from suspended loads?
3. What three confirmations should be made before lifting?

THE LIFTING WORKFLOW SOLID LOAD



PRE-LIFT PREPARATION

Verify before lifting



OPERATION CONTROL

Monitor the lifting



CRITICAL HAZARD MITIGATION

Address high-risk situations



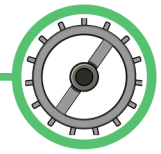
THE "NO-GO" ZONE

Establish exclusion zones



POST-LIFT COMPLETION

Inspect the completed lift



TECHNICAL VERIFICATION

Ensure lifting equipment is certified

FALL ZONES



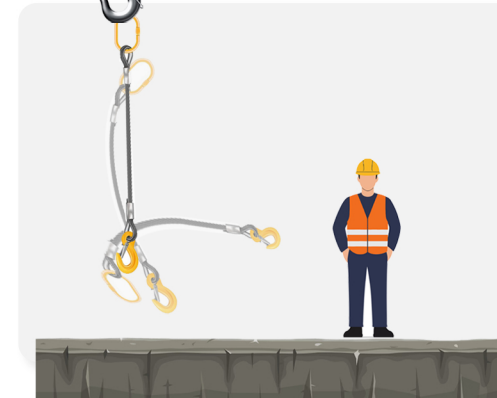
Solid Load



FALL ZONE



Flexible Load



FALL ZONE

TOP VIEW

